



# Acclaim™

Architectural Loudspeakers

Superb clarity for the  
discriminating music or  
home theater enthusiast



# Acclaim 7 Series



7.0" In-ceiling  
7W76



Russound's new Acclaim 7 Series loudspeakers fill your home with clear high-fidelity sound. Ultra-light weight materials and rigid chassis designs provide the Acclaim 7 Series with enhanced power handling and greater efficiency over previous Russound loudspeaker models.

When performance and clarity are paramount, Russound's Acclaim 7 Series speakers deliver superb sound through innovative materials and design.





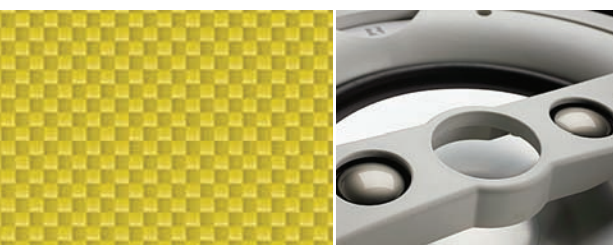
# Acclaim 5 Series



8.0" In-ceiling  
Single Point Stereo  
5C51

The Acclaim 5 Series redefines affordable performance in architectural loudspeakers. Featuring advanced design and materials, the Acclaim 5 Series is engineered to deliver accurate sound with quality and value.

For quality and performance, the Acclaim 5 Series speakers provide an excellent alternative to more expensive speakers without compromise to aesthetics or efficiency.



# tailored to provide superior performance



When Russound embarked on the mission to design the Acclaim family of architectural loudspeakers, we set the bar high. As a leader in the custom installation market place, our goal was to create speakers that deliver superior performance for a wide range of multiroom audio installations including background music, dedicated listening and home theater environments.



## perfect balance of essential elements

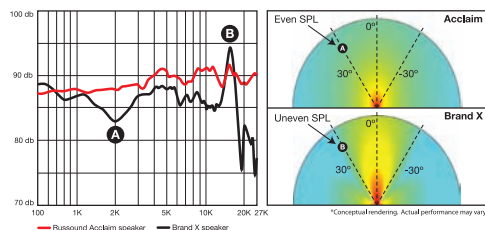


To achieve this goal, our acoustical engineers used the following targets: improved off-axis response, increased structural rigidity, greater power handling, higher efficiency and a comprehensive range of sizes and applications. With these elements in hand, Russound crafted the Acclaim 5 and 7 Series lines of speakers, each tailored to provide the necessary elements and features for any home.



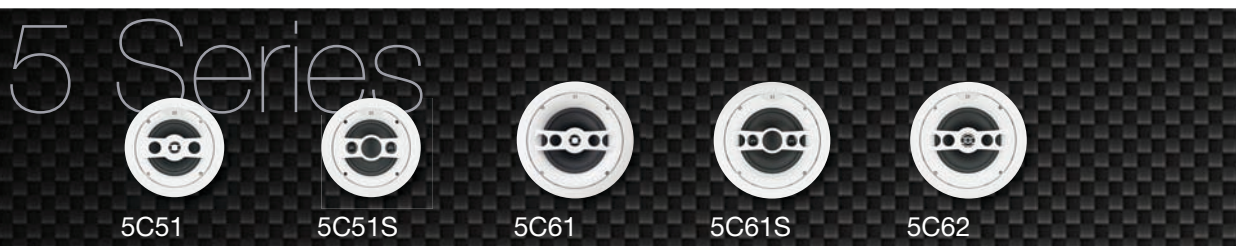
# on target, off axis

For improved off-axis listening, all Acclaim 7 Series speakers utilize pivoting tweeters and asymmetrical high-slope crossovers that provide a truly “blended” sound in any environment.

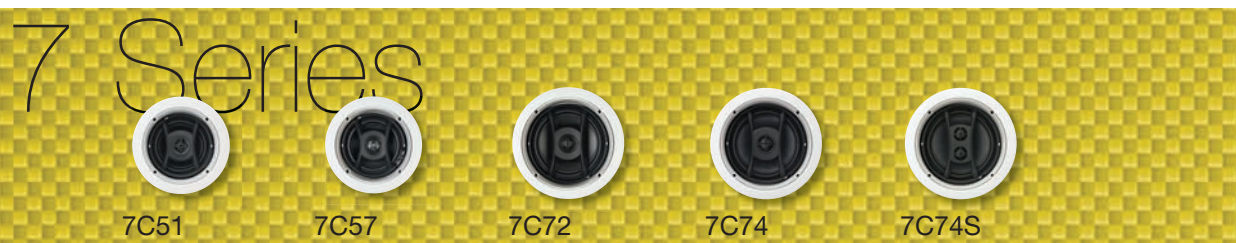


## Off-axis Response

Russound's Acclaim 7 Series speaker vs. our competition's offering measured 30° off-axis at 1 meter. (A) indicates the typical hole in frequency response when listening off-axis. The high slope crossover used in Acclaim 7 speakers prevents the “hole,” providing better off-axis sound. (B) demonstrates how the Acclaim's Aluminum/Magnesium alloy tweeters have been designed to minimize the 15 kHz break-up peak common in the typical metal dome tweeters used by our competition.



Type:	2-way in-ceiling	In-ceiling single point stereo	2-way in-ceiling	In-ceiling single point stereo	2-way in-ceiling
Woofer:	5.25" (13.3 cm) Polypropylene cone	5.25" (13.3 cm) Polypropylene cone	6.5" (16.5 cm) Polypropylene cone	6.5" (16.5 cm) Polypropylene cone	6.5" (16.5 cm) Polypropylene cone
Tweeter:	Pivoting 0.5" (13 mm) Polyetherimide	(2) 0.5" (13 mm) Polyetherimide	Pivoting 0.5" (13 mm) Polyetherimide	(2) 0.5" (13 mm) Polyetherimide	Pivoting 1.0" (25 mm) Silk
Frequency response:	54Hz-20kHz -6dB/±3dB	49Hz-20kHz -6dB/±3dB	46Hz-20kHz -6dB/±3dB	43Hz-20kHz -6dB/±3dB	46Hz-20kHz -6dB/±3dB
Sensitivity:	87dB SPL 2.83V @ 1m	86dB SPL 2.83V @ 1m	87dB SPL 2.83V @ 1m	88dB SPL 2.83V @ 1m	87dB SPL 2.83V @ 1m
Nominal impedance:	8 ohms	6/6 ohms	8 ohms	6/6 ohms	8 ohms
Recommended power:	10-75 watts RMS	10-75 watts RMS	10-75 watts RMS	10-75 watts RMS	10-85 watts RMS
Overall dimensions:	8.2" dia. (21 cm)	8.2" dia. (21 cm)	9.83" dia. (25 cm)	9.83" dia. (25 cm)	9.83" dia. (25 cm)
Cutout dimensions:	6.75" dia. (17.1 cm)	6.75" dia. (17.1 cm)	8.375" dia. (21.3 cm)	8.375" dia. (21.3 cm)	8.375" dia. (21.3 cm)
Mounting depth:	3.0" (7.6 cm)	3.0" (7.6 cm)	3.5" (8.9 cm)	3.5" (8.9 cm)	3.5" (8.9 cm)
Grille Type:	Steel	Steel	Steel	Steel	Steel



Type:	2-way in-ceiling	2-way in-ceiling	2-way in-ceiling	2-way in-ceiling	In-ceiling single point stereo
Woofer:	5.25" (13.3 cm) Polypropylene cone	5.25" (13.3 cm) Woven Kevlar	7.0" (17.8 cm) Polypropylene cone	7.0" (17.8 cm) IMPP ribbed cone	7.0" (17.8 cm) IMPP ribbed cone
Tweeter:	Pivoting 0.5" (13 mm) Polyetherimide	Pivoting 1.0" (25 mm) Aluminum/Magnesium alloy	Pivoting 1.0" (25 mm) Silk	Pivoting 1.0" (25 mm) Silk	(2) 1.0" (25 mm) Silk
Frequency response:	45Hz-20kHz -6dB/±3dB	47Hz-27kHz -6dB/±3dB	38Hz-20kHz -6dB/±3dB	34Hz-20kHz -6dB/±3dB	28Hz-20kHz -6dB/±3dB
Sensitivity:	87.5dB SPL 2.83V @ 1m	88dB SPL 2.83V @ 1m	91dB SPL 2.83V @ 1m	90dB SPL 2.83V @ 1m	90dB SPL 2.83V @ 1m
Nominal impedance:	6 ohms	4/5/6 ohms	6 ohms	6 ohms	6/6 ohms
Recommended power:	10-75 watts RMS	10-125 watts RMS	10-85 watts RMS	10-100 watts RMS	10-100 watts RMS
Frequency Adjustment:	N/A	Treble & Bass switches (+3/0/-3dB)	N/A	N/A	N/A
Terminals:	Spring terminals	Nickel Plated binding post	Spring terminals	Spring terminals	Spring terminals
Dispersion adjustment:	Twist & Tilt, 0° or 15° angle	Twist & Tilt, 0° or 15° angle	Twist & Tilt, 0° or 15° angle	Twist & Tilt, 0° or 15° angle	Twist & Tilt, 0° or 15° angle
Overall dimensions:	8.25" dia. (21 cm)	8.25" dia. (21 cm)	9.75" dia. (24.8 cm)	9.75" dia. (24.8 cm)	9.75" dia. (24.8 cm)
Cutout dimensions:	6.75" dia. (17.1 cm)	6.75" dia. (17.1 cm)	8.375" dia. (21.3 cm)	8.375" dia. (21.3 cm)	8.375" dia. (21.3 cm)
Mounting depth:	4.5" (11.4 cm) at 15° tilt	4.5" (11.4 cm) at 15° tilt	4.5" (11.4 cm) at 15° tilt	4.5" (11.4 cm) at 15° tilt	4.5" (11.4 cm) at 15° tilt
Grille Type:	Aluminum	Aluminum	Aluminum	Aluminum	Aluminum





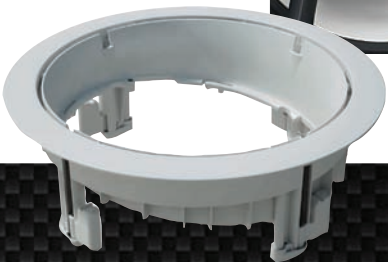
better baffles, better sound



The Acclaim 5 and 7 Series feature baffles that are more rigid than previous Russound speaker models. Increased baffle rigidity allows for better bass and improved midrange detail while reducing resonance and eliminating unwanted vibrations.

Twist & Tilt

In-ceiling models feature Russound's patented Twist & Tilt™ technology, which allows the driver and basket assembly to be tilted 15° to focus output toward the chosen listening area.



5W62

5W64

5W87

Type:	2-way in-wall	2-way in-wall	2-way in-wall
Woofer:	6.5" (16.5 cm) Polypropylene cone	6.5" (16.5 cm) IMPP with Kevlar fibers	8.0" (20.3 cm) Kevlar
Tweeter:	Pivoting 1.0" (25 mm) Silk	Pivoting 1.0" (25 mm) Silk	Pivoting 1.0" (25 mm) Titanium
Frequency response:	46Hz-20kHz -6dB/±3dB	44Hz-20kHz -6dB/±3dB	35Hz-20kHz -6dB/±3dB
Sensitivity:	87dB SPL 2.83V @ 1m	87dB SPL 2.83V @ 1m	90dB SPL 2.83V @ 1m
Nominal impedance:	8 ohms	8 ohms	6/8 ohms
Recommended power:	10-85 watts RMS	10-100 watts RMS	10-175 watts RMS
Overall dimensions:	12.2"H x 8.2"W (31 cm x 21 cm)	12.2"H x 8.2"W (31 cm x 21 cm)	14.8"H x 10.1"W (37.6 cm x 25.7 cm)
Cutout dimensions:	10.75"H x 6.75"W (27.3 cm x 17.1 cm)	10.75"H x 6.75"W (27.3 cm x 17.1 cm)	13.375"H x 8.75"W (34 cm x 22.2 cm)
Mounting depth:	3.3" (8.4 cm)	3.3" (8.4 cm)	3.94" (10 cm)
Grille Type:	Steel	Steel	Steel



7W75



7W76



7W77



7W86



7W55LCR



7W57LCR

Type:	2-way in-wall	2-way in-wall	2-way in-wall	3-way in-wall	2-way in-wall LCR	2-way in-wall LCR
Woofer:	7.0" (17.8 cm) Aluminum	7.0" (17.8 cm) Woven Yellow Kevlar	7.0" (17.8 cm) Treated Black Kevlar	8.0" (20.3 cm) Woven Yellow Kevlar	(2) 5.25" (13.3 cm) Aluminum	(2) 5.25" (13.3 cm) Treated Black Kevlar
Tweeter:	Pivoting 1.0" (25 mm) Teteron®	Pivoting 1.0" (25 mm) Titanium	Pivoting 1.0" (25 mm) Aluminum/Magnesium alloy	Pivoting 1.0" (25 mm) Titanium tweeter & 3.0" Polypropylene midrange	Pivoting 1.0" (13 mm) Teteron®	Pivoting 1.0" (25 mm) Aluminum/Magnesium alloy
Frequency response:	36Hz-20kHz -6dB/±3dB	42Hz-22kHz -6dB/±3dB	42Hz-27kHz -6dB/±3dB	32Hz-22kHz -6dB/±3dB	44Hz-20kHz -6dB/±3dB	41Hz-27kHz -6dB/±3dB
Sensitivity:	88dB SPL 2.83V @ 1m	90.5dB SPL 2.83V @ 1m	90.5dB SPL 2.83V @ 1m	90dB SPL 2.83V @ 1m	90dB SPL 2.83V @ 1m	90dB SPL 2.83V @ 1m
Nominal impedance:	6 ohms	4/5/6 ohms	4/5/6 ohms	4/5/6 ohms	4/5/6 ohms	4/5/6 ohms
Recommended power:	10-125 watts RMS	10-150 watts RMS	10-175 watts RMS	10-150 watts RMS	10-100 watts RMS	10-150 watts RMS
Frequency Adjustment:	N/A	Treble & Bass switches (+3/0/-3dB)	Treble & Bass switches (+3/0/-3dB)	Treble & Bass switches (+3/0/-3dB)	Treble & Bass switches (+3/0/-3dB)	Treble & Bass switches (+3/0/-3dB)
Terminals:	Nickel binding posts	Gold plated binding posts	Gold plated binding posts	Gold plated binding posts	Nickel Plated binding post	Gold Plated binding posts
Dispersion adjustment:	Iso-Mount thermopolymer isolation mounting gasket	Iso-Mount thermopolymer isolation mounting gasket	Iso-Mount thermopolymer isolation mounting gasket	Iso-Mount thermopolymer isolation mounting gasket	Iso-Mount thermopolymer isolation mounting gasket	Iso-Mount thermopolymer isolation mounting gasket
Overall dimensions:	14.5"H x 9.75"W (36.8 cm x 24.8 cm)	14.5"H x 9.75"W (36.8 cm x 24.8 cm)	14.5"H x 9.75"W (36.8 cm x 24.8 cm)	16.625"H x 10.625"W (42.2 cm x 27 cm)	9"H x 15.75"W (30 cm x 40 cm)	9"H x 15.75"W (30 cm x 40 cm)
Cutout dimensions:	13"H x 8.25"W (33 cm x 21 cm)	13"H x 8.25"W (33 cm x 21 cm)	13"H x 8.25"W (33 cm x 21 cm)	15.125"H x 9.125"W (38.4 cm x 23.2 cm)	7.25"H x 14.25"W (18.4 cm x 36.2 cm)	7.25"H x 14.25"W (18.4 cm x 36.2 cm)
Mounting depth:	3.6" (9.1 cm)	3.9" (9.9 cm)	3.9" (9.9 cm)	3.9" (9.9 cm)	3.9" (9.9 cm)	3.9" (9.9 cm)
Grille Type:	Aluminum	Aluminum	Aluminum	Aluminum	Aluminum	Aluminum

## Flexbox Back Boxes

Flexbox speaker back boxes reduce background noise, provide a moisture barrier, diffuse distortion and improve sound quality. The flexible construction allows for easy installation in retrofit and new construction settings. Both models are flame retardant and meet ASTM E119 and UL 263/ NFPA 251 (1Hour) and ASTM E84/NFPA 70 Plenum standards.



### **Flexbox Fire Rated In-ceiling Back Box** FBC1-FR

Dimensions:  
14"W x 6"D x 17.5"H  
(355 x 152 x 445 mm)  
Weight  
6.7 lbs (3 kg)



### **Flexbox Fire Rated In-wall Back Box** FBW1-FR

Dimensions:  
14.5"W x 3.5"D x 16"H  
(368 x 89 x 406 mm)  
Weight  
5.4 lb (2.4 kg)

## Speaker Rough-in Brackets

These brackets let you stake out your speaker mounting position before the drywall goes up in your new home. The included wings make it possible to install this bracket between most joists or rafters.

### **5.25" In-ceiling Rough-in Bracket** SB-C50



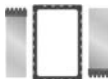
### **6.5" or 7.0" In-ceiling Rough-in Bracket** SB-C67



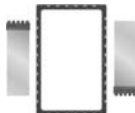
### **8" In-ceiling Rough-in Bracket** SB-C80



### **6.25" In-wall Rough-in Bracket** SB-W60



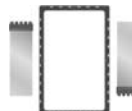
### **8" In-wall Rough-in Bracket** SB-W80



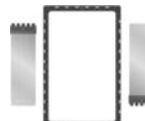
### **Acclaim 7 Series 7" In-wall Rough-in Bracket** SB-W70



### **Acclaim 7 Series 8" 3-way In-wall Rough-in Bracket** SB-W83



### **Acclaim 7 Series 5.25" LCR In-wall Rough-in Bracket** SB-7LCR



5 Forbes Road, Newmarket, New Hampshire 03857 USA

603.659.5170

[www.russound.com](http://www.russound.com)

Since 1967, innovation, quality and reliability have been the core of the Russound product tradition. Today, Russound offers everything for enjoying multiroom audio-video in your home. All audio-video distributed solutions are built to high standards and designed with the unique consideration of making products that are a pleasure to live with and enjoy.

©2009 Russound. All rights reserved. All trademarks are the property of their respective owners. Specifications are subject to change without notice. Russound is not responsible for typographical errors or omissions. LR3155-0002 03/09